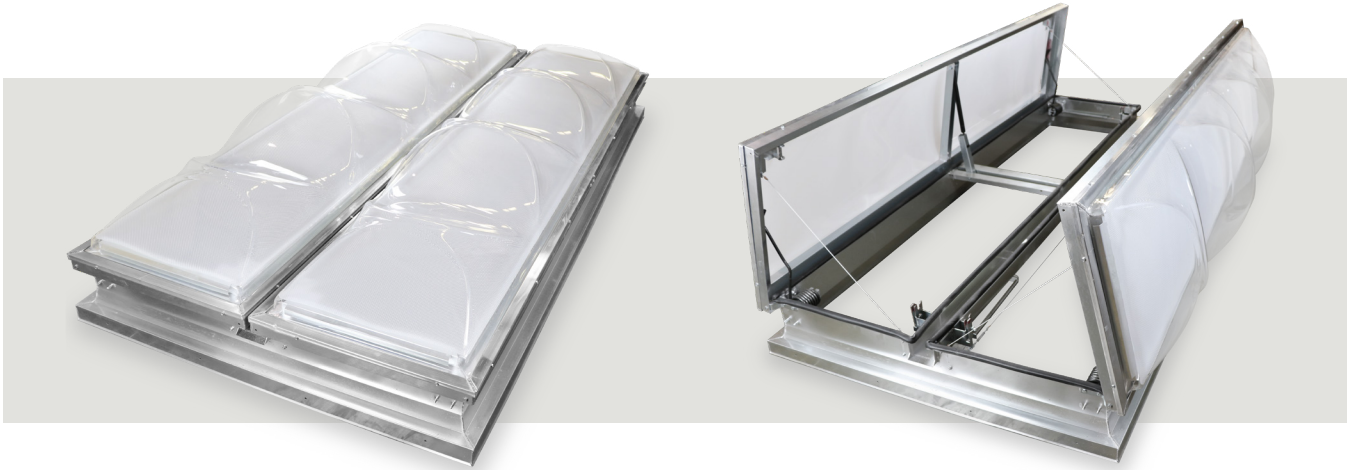
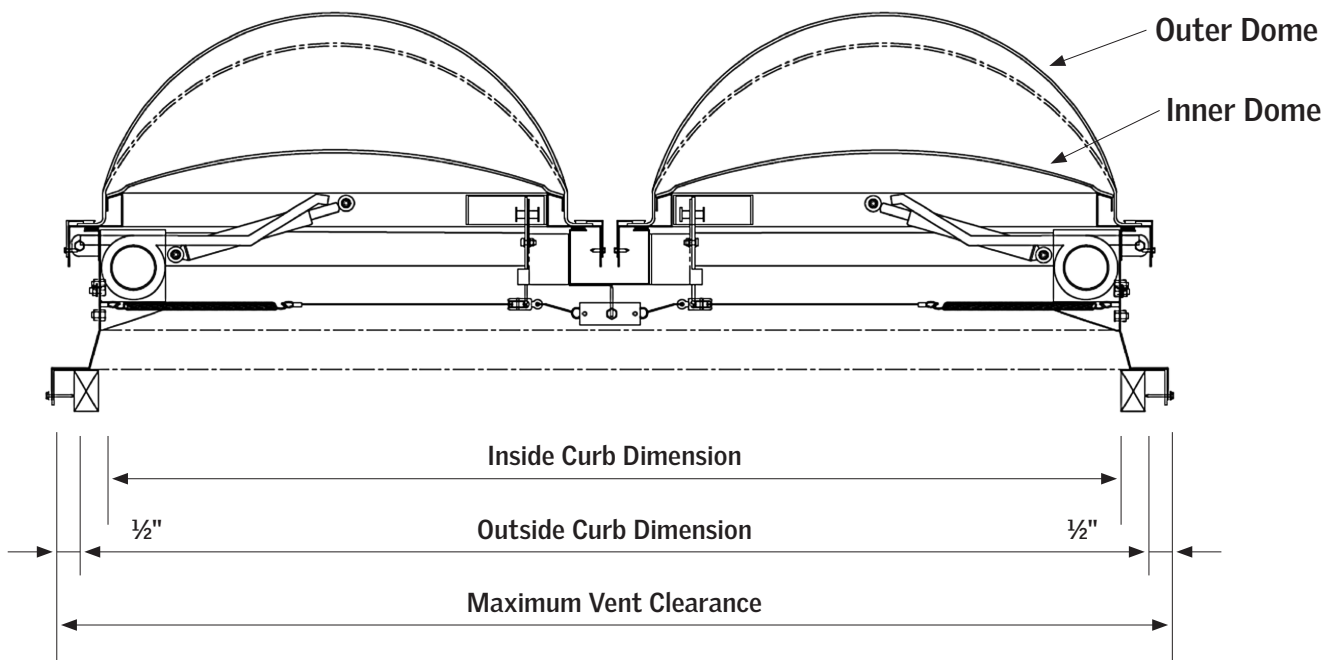


Smoke Vent Data Sheet

The smoke vent is a curb mounted, double leaf lid vent equipped with automatic self-lifting mechanisms and UL-listed fusible links. Available in single or double dome models.



Model Size	4848	4896	6072	6467
Inside Curb Dimension (rough opening)	48" x 48"	48" x 96"	60" x 72"	63.75" x 66.75"
Outside Curb Dimension	51" x 51"	51" x 99"	63" x 75"	66.75" x 69.75"
Maximum Vent Clearance	52" x 52"	52" x 100"	64" x 76"	67.75" x 70.75"



Features

- 1 Curb mounted, double leafed lids
- 2 Polycarbonate SkyArc domes
- 3 Internal/external emergency release handles
- 4 Steel springs with dampers
- 5 UL certified and labeled
- 6 Galvanized steel construction 0.0625" (1.59mm) with 0.078" (1.98mm) cross member for additional strength

Smoke Vent Options

- 1 Single (ULSVDCM) or double dome (ULSV2DCM)
- 2 Double dome glazing options
 - a. Clear smooth polycarbonate (0.118" thick) over white prismatic acrylic (0.118" thick)
 - b. Clear smooth polycarbonate (0.118" thick) over white smooth acrylic (0.118" thick)
 - c. White smooth polycarbonate (0.118" thick) over clear smooth acrylic (0.1188 " thick)
- 3 Single dome glazing options
 - a. White smooth polycarbonate
- 4 Fusible link options - UL listed
 - a. 165° F e. 360° F
 - b. 212° F f. 370° F
 - c. 280° F g. 386° F
 - d. 350° F h. 450° F (non-UL listed)
- 5 Ventilation Curb Extension (CAV) – 4848, 4896 and 6072 sizes available

Features

- 1 Loads: Minimum 30-lbf/sq. ft. (1.4-kPa) internal uplift load for five cycles without opening.
- 2 Dome shall remain intact when subjected to the force of:
 - a. A bag filled with 45.4 kg (100 lb) of sand being dropped from a height of 1.2 m (4 ft), or
 - b. A bag filled with 90.8 kg (200 lb) of sand being dropped from a height of 0.61 m (2 ft) onto the top of the cover.
- 3 When release is actuated, lid shall open against 10-lbf/sq. ft. (0.5-kPa) snow or wind load and lock in position.

Warranty

Smoke vents shall be free from manufacturing defects in materials and workmanship for a period of ten (10) years from the date of shipment. Should a product fail to function in normal use within this period, manufacturer shall furnish a replacement or new part at manufacturers' discretion.

